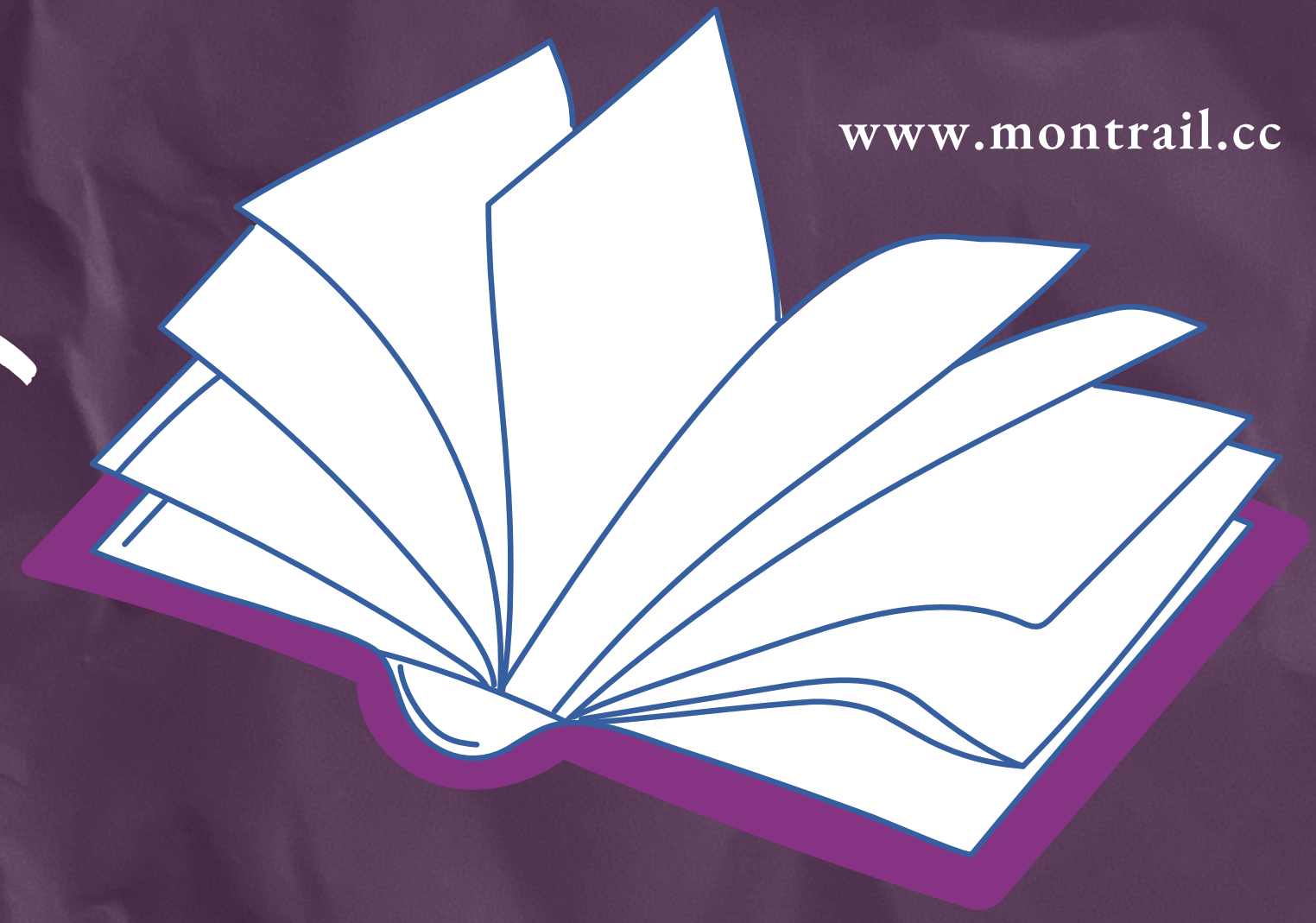


ORIGINALS

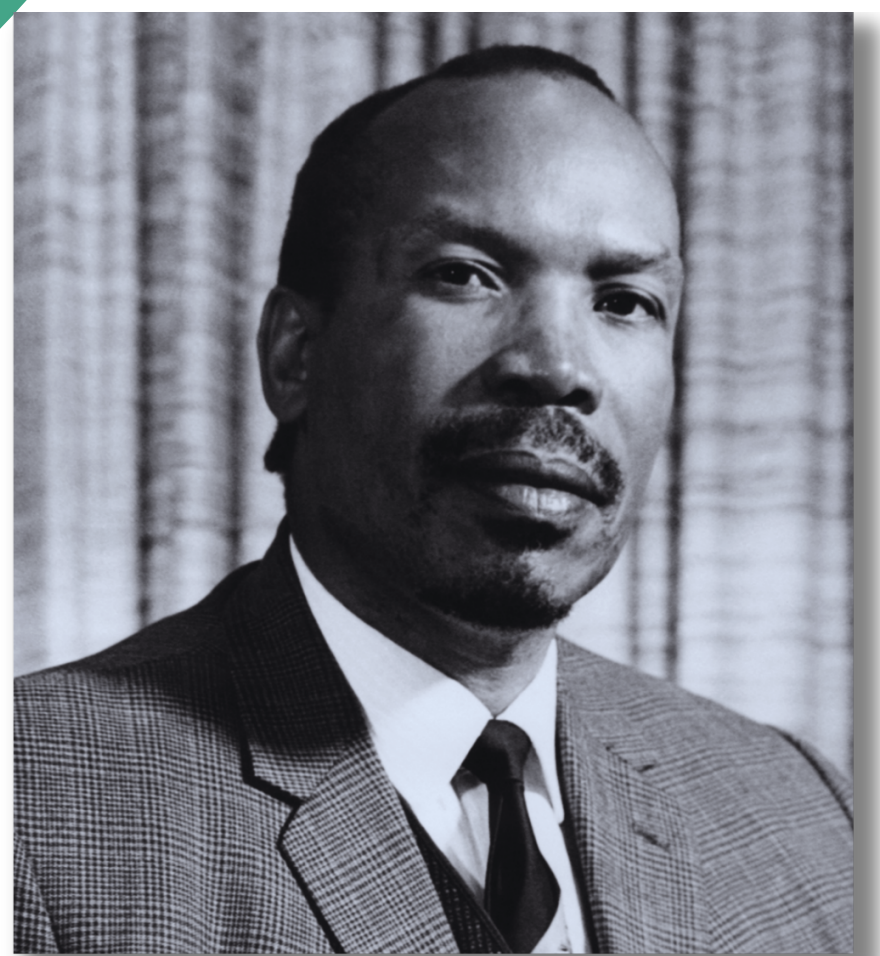
LEADERSHIP ICONS



ICONS is a MonTrail original series that shines a light on transformative African political leaders. These remarkable individuals undertook missions greater than themselves, driven by the goal of creating lasting positive change. They dedicated their lives to resolving pressing issues and transforming hopelessness into a future full of promise for their communities and the continent as a whole. Their legacy and positive contributions continue to inspire and challenge us all.



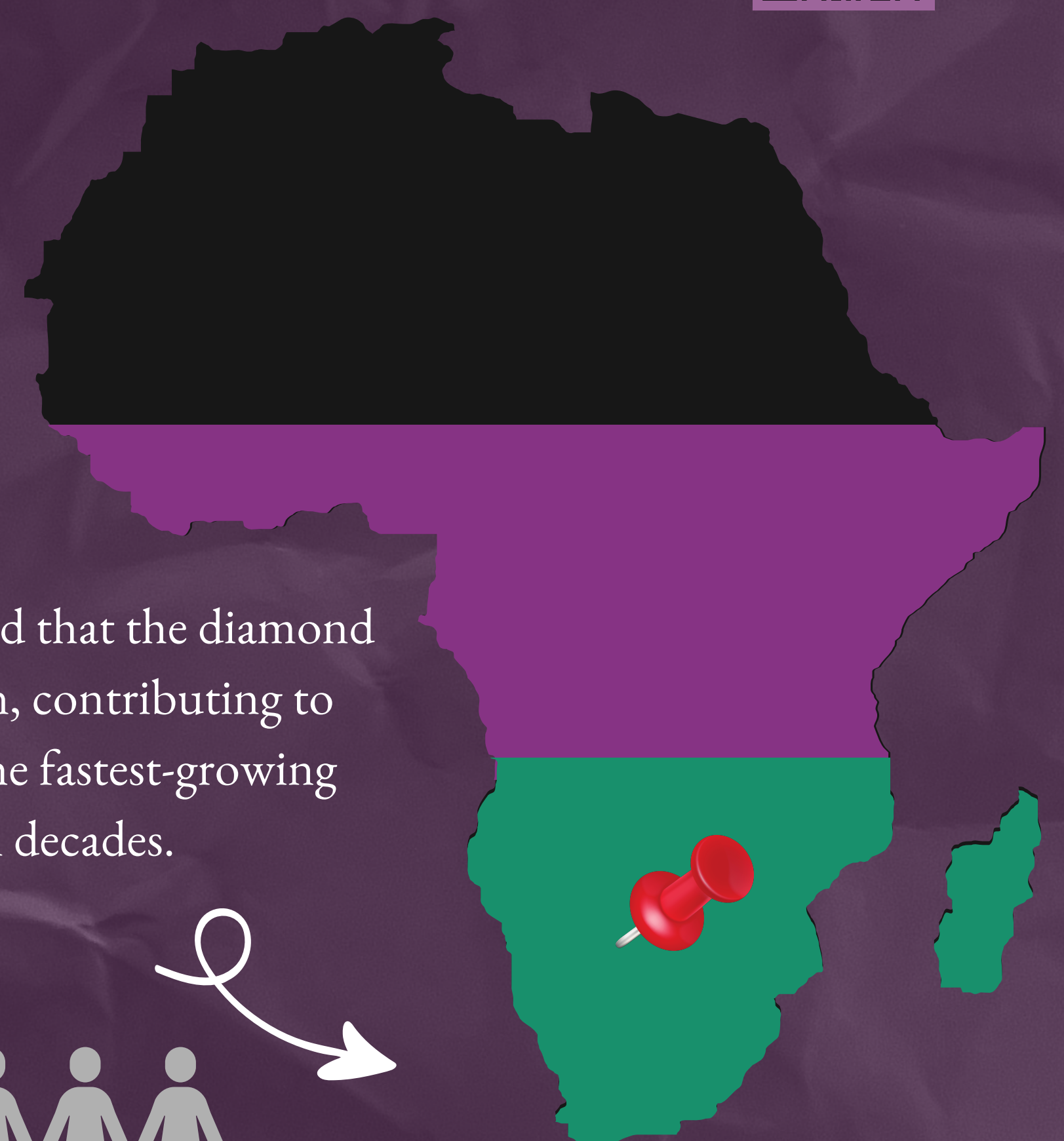
SCAN ME



“ We should write our own history books to prove that we did have a past, and that it was a past that was just as worth writing and learning about as any other ”

This prudent management ensured that the diamond wealth was a blessing to the nation, contributing to Botswana's emergence as one of the fastest-growing economies in the world for several decades.

~ MonTrail Originals, ICONS



The stark contrast between Africa's rich endowment of natural resources and its perceived economic status on the global stage underscores a profound truth: resources alone do not guarantee prosperity.

~ MonTrail Originals, ICONS



!!! SIR SERETSE KHAMA



FACTS

- Born on July 1, 1921, in Serowe, Bechuanaland (now Botswana).
- He was the heir to the Bangwato chieftaincy.
- He also studied law at Balliol College, Oxford.
- At the age of 44, Khama became the first President of Botswana in 1966.

TRAITS/SKILLS

- Pragmatism
- Focus
- Negotiation
- Resourcefulness
- Collaboration
- Courage
- Determination
- Integrity/Honesty
- Decisiveness
- Purpose-driven

IMPACT

- Khama oversaw an era of remarkable economic growth in Botswana.
- His foreign policy was characterized by non-alignment, balancing relationships between different global powers.
- He advanced social welfare, improving education and health services.

LEGACY

- His approach to managing Botswana's mineral resources serves as a model for sustainable economic development in resource-rich countries.
- Khama's governance established Botswana as a respected, meritocratic and stable nation on the international stage.